



PERIOD  
HOMES



Church Road  
Hatfield Peverel, Chelmsford CM3 2LD  
£825,000



## Church Road, Hatfield Peverel, Chelmsford, CM3 2LD

Nestled within the sought-after village of Hatfield Peverel, Shepherd's Cottage presents a rare opportunity to acquire a characterful, detached home within a delightful setting. Dating back to the 16th century and showcasing all the warmth and charm of its period heritage, the property has been sympathetically enhanced through thoughtful extensions and modernisation.

Extending to approximately 2,500 sq ft (plus carport and store), the cottage offers four reception rooms, a welcoming kitchen/dining room, utility and ground floor cloakroom. A bright conservatory links the sitting room to a versatile study, while a feature fireplace provides a true focal point to the main living space. Upstairs, there are four bedrooms, including a generous principal suite with a large en-suite bathroom, alongside a stylish five-piece family bathroom. Throughout the home, practical storage and a sense of flow - together with good ceiling heights - make for easy day-to-day living, wrapped in centuries-old character.

Outside, the cottage enjoys off-street parking and a south-west facing garden complete with a natural pond and lovely views across to Little Baddow from the first floor. The setting is exceptional - set adjacent to a vibrant allotment, and moments from walks leading towards the River Chelmer and Paper Mill Lock, yet also within walking distance of Hatfield Peverel's mainline station, offering fast and frequent services into London Liverpool Street. The village itself provides an excellent range of amenities, including a primary school, shops, pubs, and direct road access to Chelmsford and the A12.

Shepherd's Cottage offers a rare blend of period character and modern practicality - a truly special opportunity in one of mid-Essex's most desirable and well-connected villages.











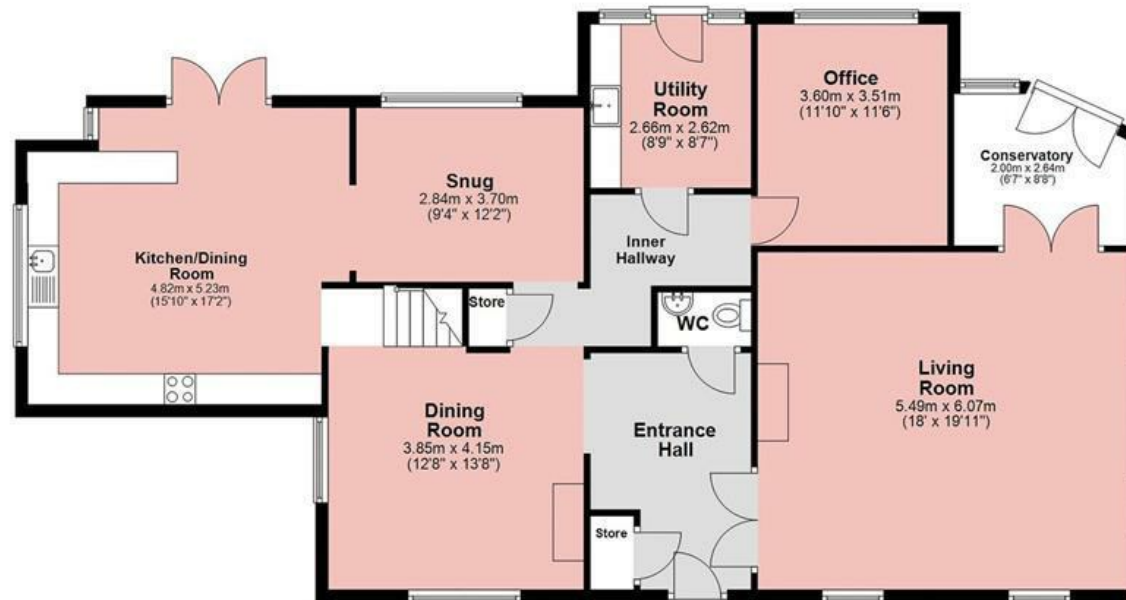






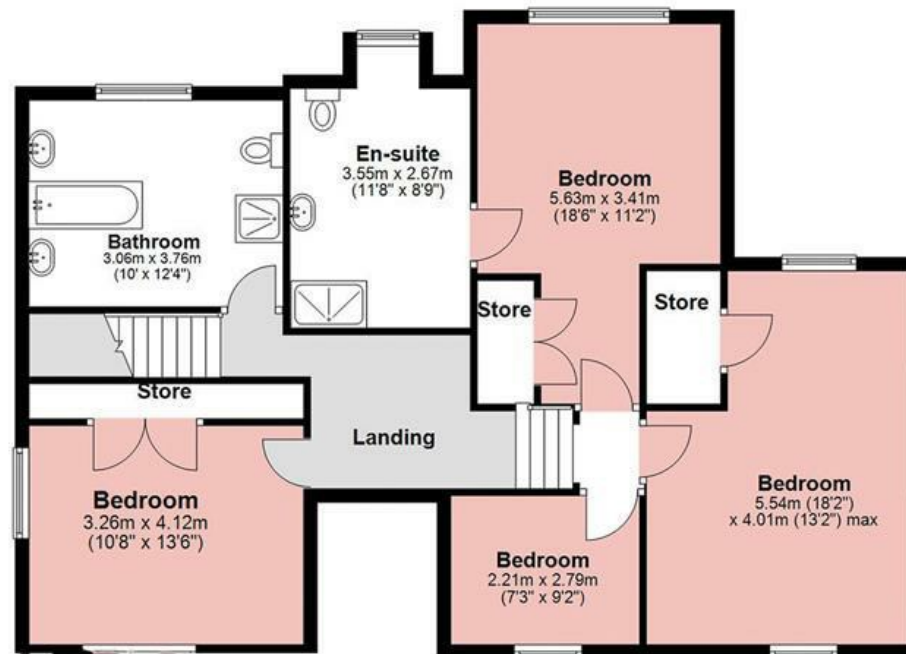
## Ground Floor

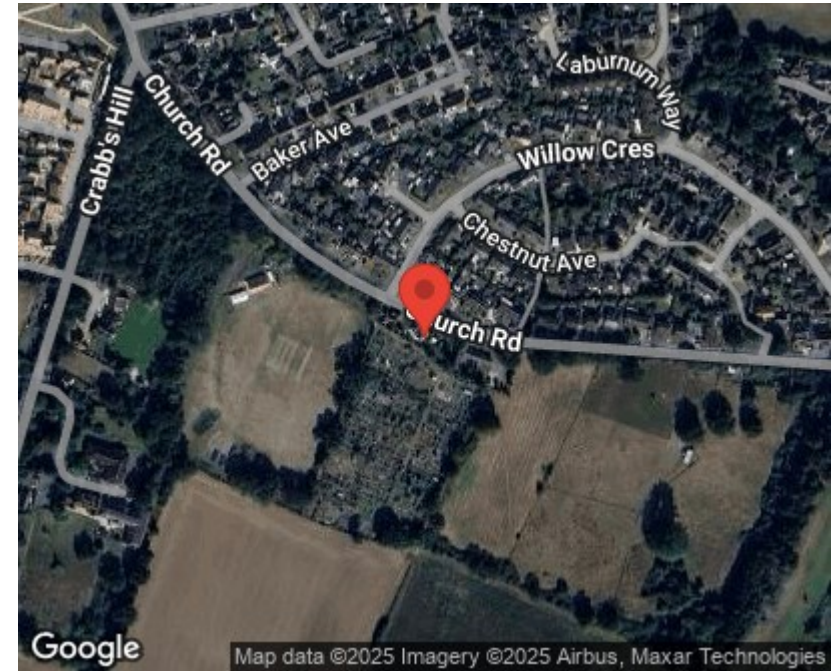
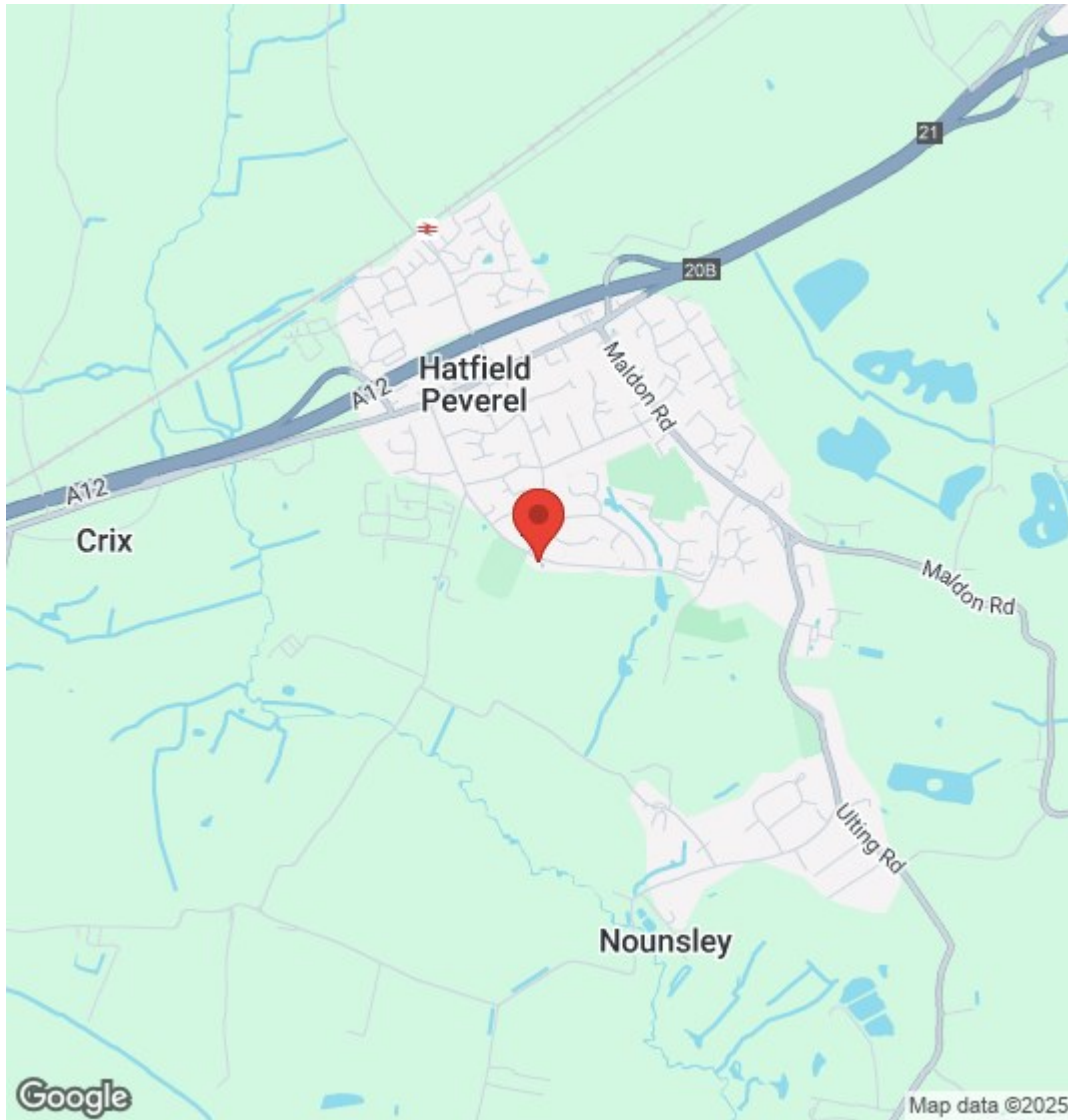
Approx. 163.5 sq. metres (1759.4 sq. feet)



## First Floor

Approx. 97.9 sq. metres (1053.4 sq. feet)





**PLEASE CALL 01277 288000 TO ARRANGE A VIEWING**  
**[www.periodhomes.co.uk](http://www.periodhomes.co.uk)**

**INDEPENDENT ESTATE AGENTS - VALUATIONS WITH NO OBLIGATION - PROFESSIONAL SERVICE**

These particulars do not constitute any part of an offer or contract. All measurements are given as a guide, no liability can be accepted for any errors arising therefrom. No responsibility is taken for any other error, omission, or mis-statement in these particulars.

Period Homes, a trading style of Walkers Village and Country Homes Limited do not make or give, whether in these particulars, during negotiations or otherwise, any representation whatsoever in relation to this property.



